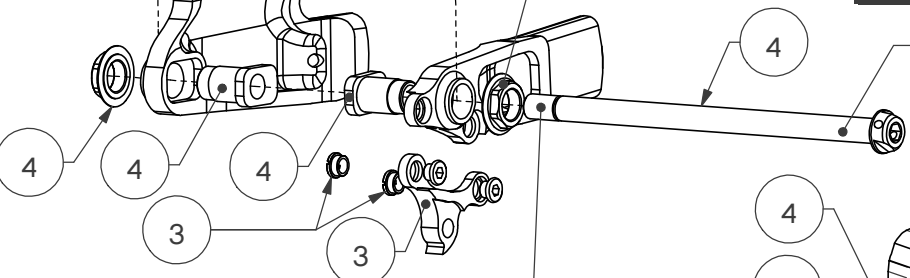
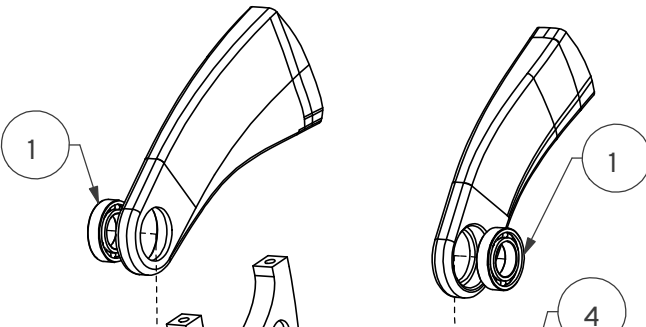


DeVINCI

Wilson Carbon

WILSON CARBON

ITEMS	#SERVICE KIT	DESCRIPTION
1	KFC15016	BEARING KIT WILSON 27.5
2	KFC16013-0	SPLIT PIVOT WLSN 27.5 CARB SHOCK BOLT BLK
3	KFC11046	DERAILLEUR HANGER + BOLT KIT
4	KFC16035-07	PIVOT KIT SHAFT WILSON 27.5 CARBON COAL
5	KFC15018	ALLOY SKIDPLATE/BOLT KIT WILSON 27.5
5	KFC15019	CARBON SKIDPLATE/BOLT KIT WILSON 27.6

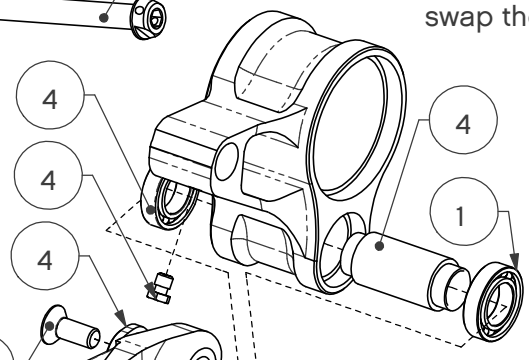


NO LOCTITE ON THIS PART, GREASE ONLY.

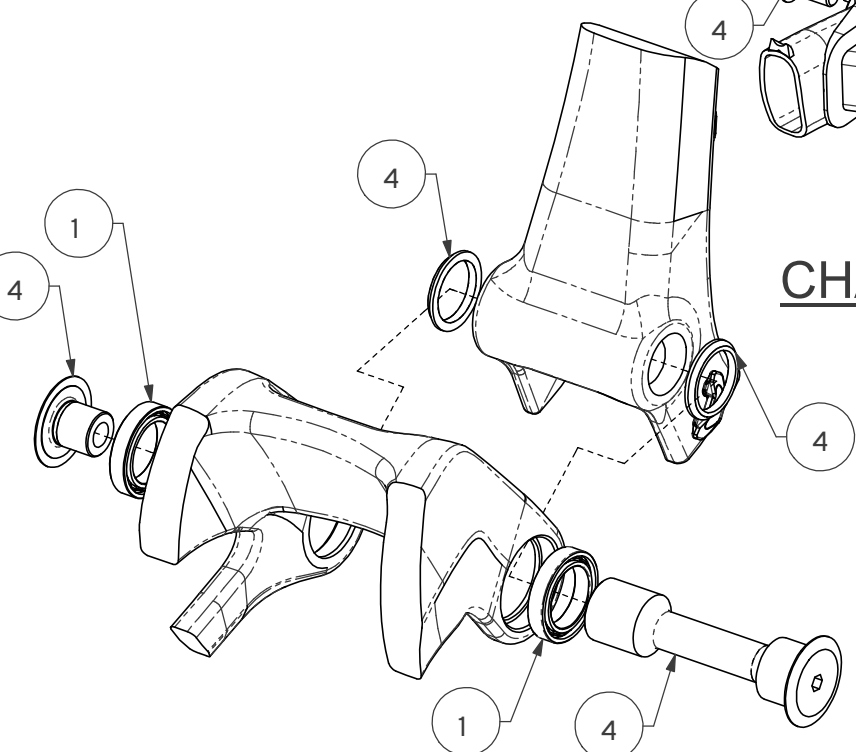
REAR PIVOT

The rear axle can be installed by the left side. To do that, you will have to swap the two dropout pivot shafts.

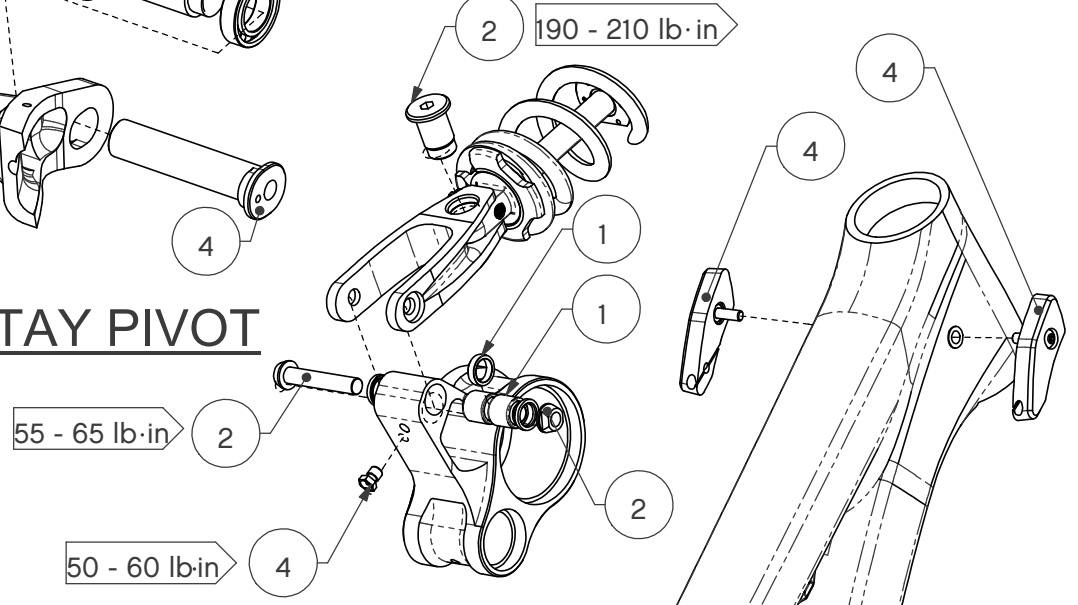
WARNING:
MAKE SURE TO CAREFULLY READ THE ASSEMBLY INSTRUCTIONS AND CLEANING INSTRUCTIONS NOTES ON NEXT PAGE.



CHAINSTAY PIVOT



SEATSTAY PIVOT

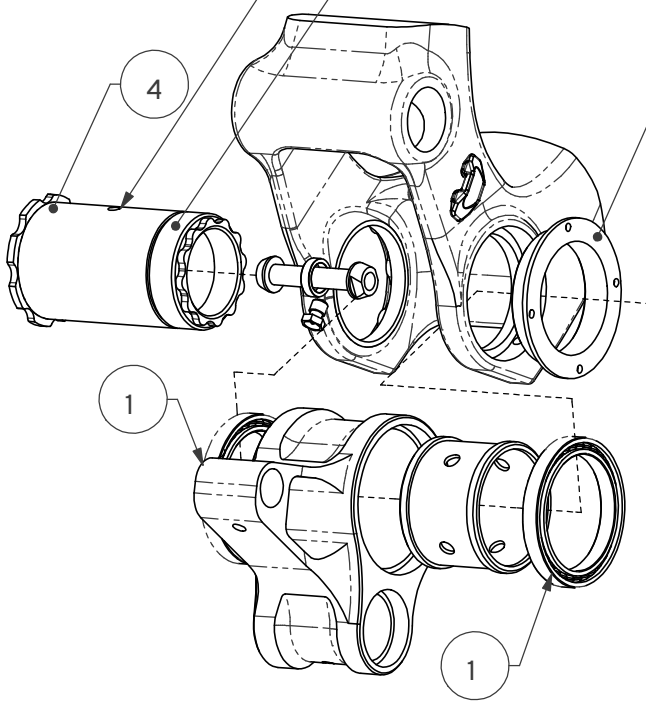


LINKAGE PIVOT

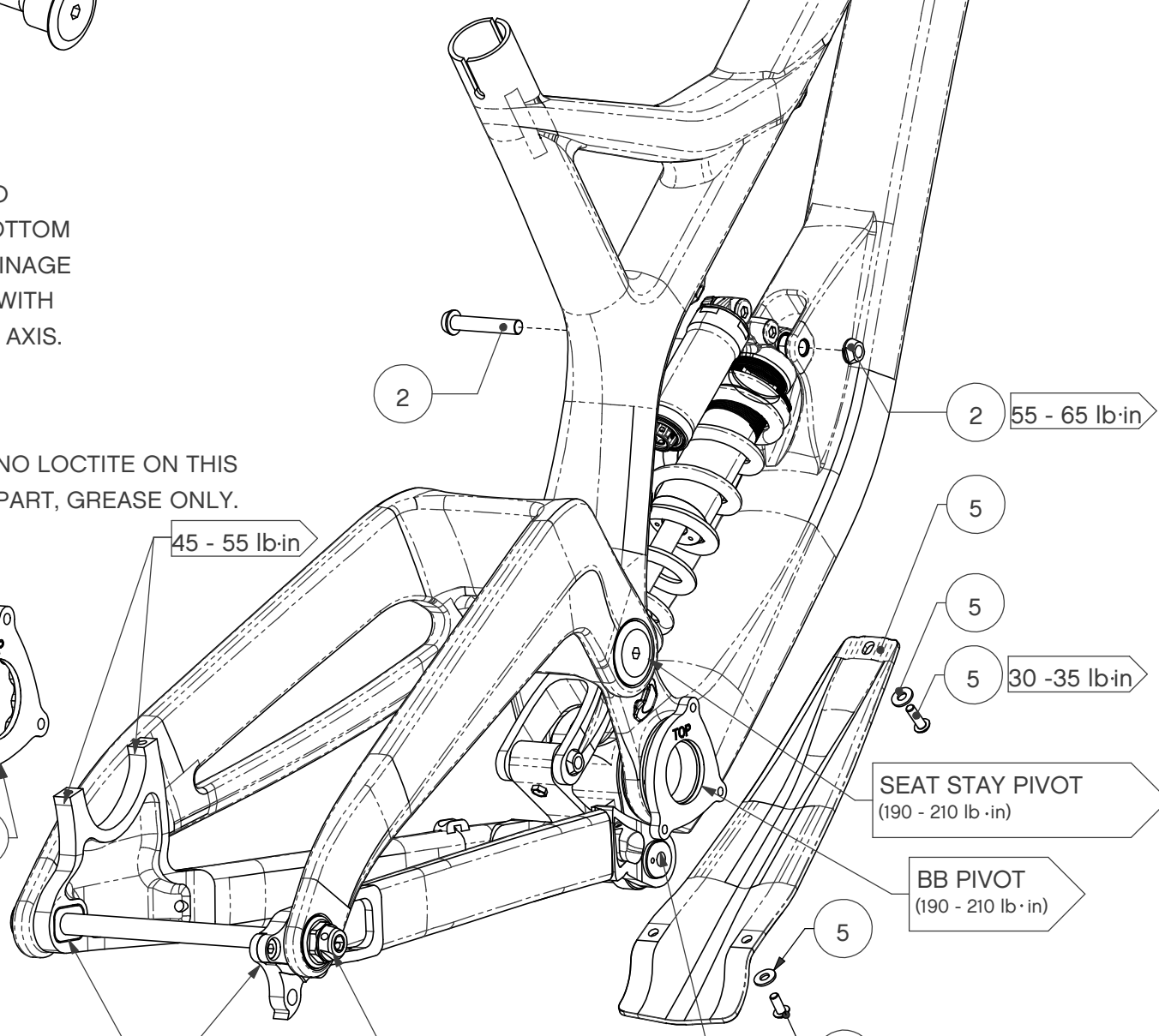
MAKE SURE TO PLACE THE BOTTOM BRACKET DRAINAGE HOLE IN LINE WITH THE VERTICAL AXIS.

NO LOCTITE ON THIS PART, GREASE ONLY.

NO LOCTITE ON THIS PART, GREASE ONLY.



BB PIVOT



DROPOUTS (190 - 210 lb·in)

REAR PIVOT (160 - 180 lb·in)

CHAINSTAY PIVOT (190 - 210 lb·in)

SEAT STAY PIVOT (190 - 210 lb·in)

BB PIVOT (190 - 210 lb·in)

30 - 35 lb·in

ASSEMBLY INSTRUCTIONS:

- 1- THOROUGHLY CLEAN THE INTERIOR OF EACH BEARING HOUSING TO REMOVE ANY DIRT OR OLD GREASE;
- 2- APPLY HIGH QUALITY WATERPROOF GREASE ON THE INSIDE FACE AND INSIDE DIAMETER OF ALL BEARING HOUSINGS BEFORE PRESS-FIT;
- 3- APPLY HIGH QUALITY WATERPROOF GREASE TO ALL PIVOT PARTS THAT CONTACT WITH THE INNER DIAMETER OF THE BEARINGS;
- 4- APPLY HIGH QUALITY WATERPROOF GREASE TO ALL NON-THREADED METAL-TO-METAL INTERFACES (EX.: PLANAR FACOF THE SPACER MAIN PIVOT THAT CONTACTS THE LATERAL FACES OF THE FRONT TRIANGLE SEATSTAY PIVOT). THESE INSTRUCTIONS ALSO APPLY TO THE SHOCK ASSEMBLY;
- 5- UNLESS OTHERWISE SPECIFIED, APPLY BLUE LOCTITE 242 ON ALL THREADS BEFORE ASSEMBLY TO THE SPECIFIED TORQUE VALUE;
- 6- THE RECOMMENDED REAR SHOCK'S RESERVOIR PRESSURE IS 125psi AND APPROX.THE SPRING RATE FOR ALL SIZESARE AS FOLLOW:
SMALL= 350 lb/in
MEDIUM= 400 lb/in
LARGE= 450 lb/in
- 7- TO PREVENT DAMAGE TO THE FRAME, THE SEATPOST MUST HAVE A MINIMUM INSERTION IN THE SEAT TUBE.

CARBON FRAME

SMALL / MEDIUM - 70mm INSERTION
LARGE / X-LARGE - 100mm INSERTION

ALUMINIUM FRAME

SMALL / MEDIUM / LARGE / X-LARGE - 100mm INSERTION

CLEANING INSTRUCTIONS:

IT IS A WELL KNOWN FACT THAT A CLEAN BIKE PERFORMS BETTER. DEVINCI RECOMMENDS WASHING YOUR BIKE REGULARLY USING A BRUSH AND SOAPY WATER. HOWEVER, DEVINCI DO NOT RECOMMEND THE USE OF A PRESSURE WASHER, SINCE THIS MAY SIGNIFICANTLY REDUCE THE SERVICE LIFE OF BALL BEARINGS. EVEN THOUGH OUR BALL BEARINGS ARE EQUIPPED WITH HIGH QUALITY DOUBLE-LIP SEALS, HIGH PRESSURE WATER CAN STILL PASS THESE SEALS AND REMOVE THE GREASE INSIDE THE BEARING. THIS MAY CAUSE PREMATURE CORROSION AND WEAR OF THE BALL BEARINGS.